

Red October

Timber from Urals



ro1910.ru



**Full cycle woodworking plant:
we harvest, transport and process
timber without intermediaries**

Brief



1910

Company was founded

Perm city, Russia

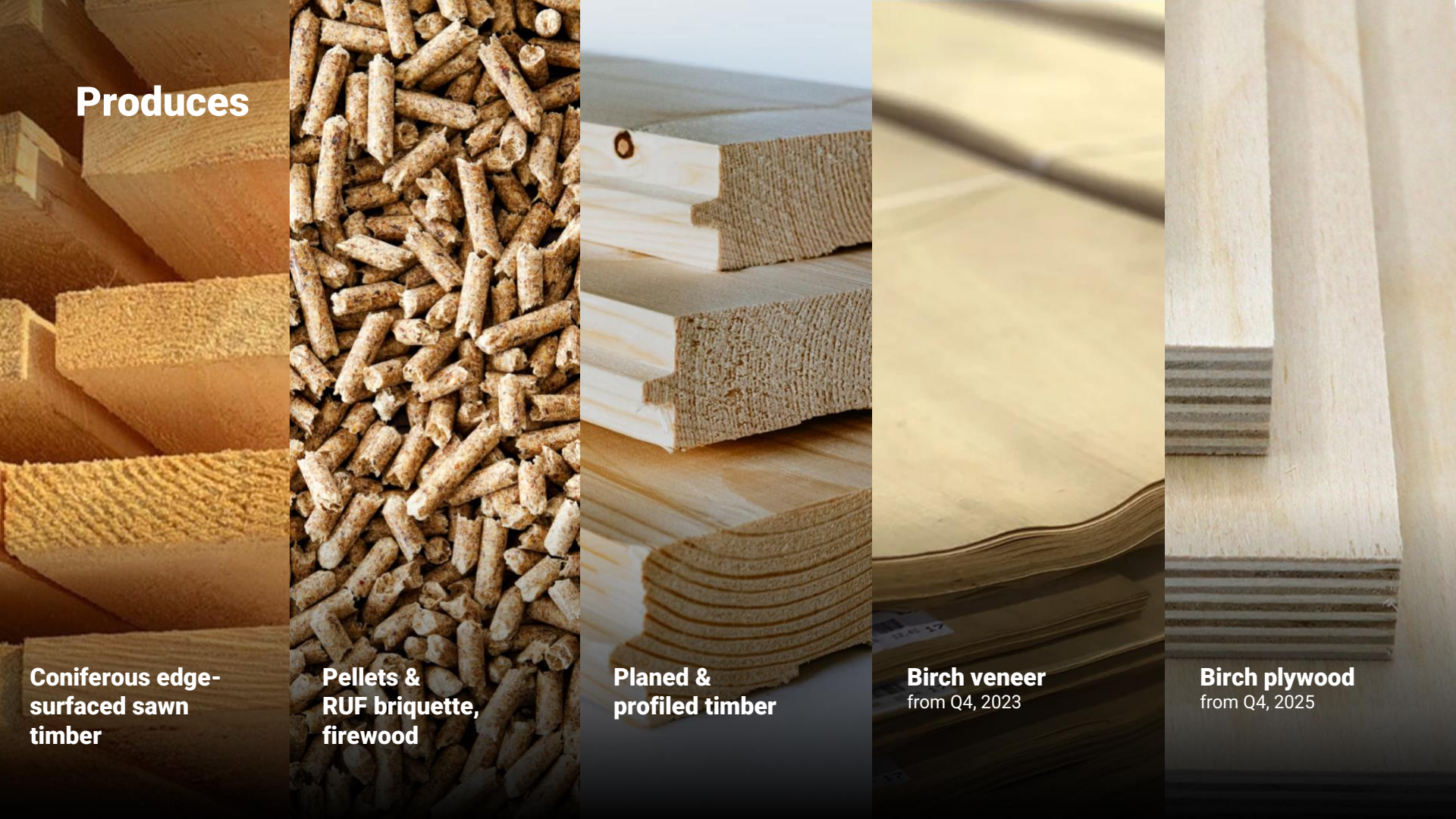
Head office and 2 factories are situated in

80%

Export share of the company

>20 countries

Stable customers all over the world



Produces

**Coniferous edge-
surfaced sawn
timber**

**Pellets &
RUF briquette,
firewood**

**Planed &
profiled timber**

Birch veneer
from Q4, 2023

Birch plywood
from Q4, 2025

Main export markets

- China
- South-east asia
- Central asia
- Middle East
- North Africa
- Russia



Delivery geography

80%

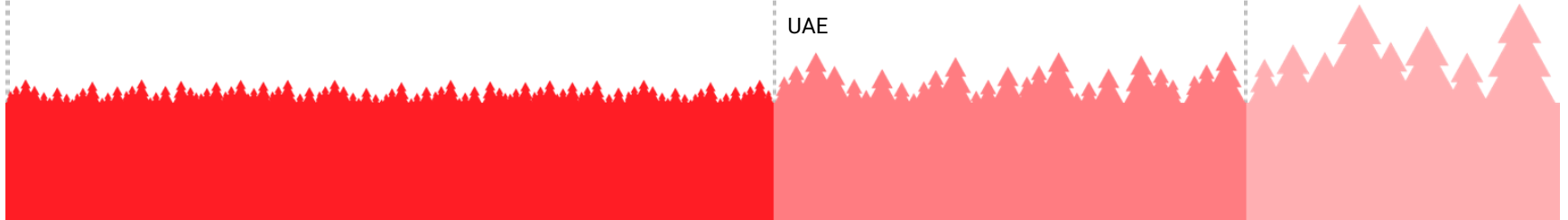
Crucial supplies

Russia
China
Iran
Uzbekistan
Iraq
Turkey
India

20%

Medium and small supplies

Egypt
Lebanon
Azerbaijan
Tadjikistan
Kazakhstan
Malaysia
South Korea
Saudi Arabia
UAE



Benefits

6

Harvesting complexes

>1.000.000 Ha

Own forest areas



50%

Pine

50%

Spruce



12.000 M³

Monthly production volume of sawn timber

8.000 M³

for veneer

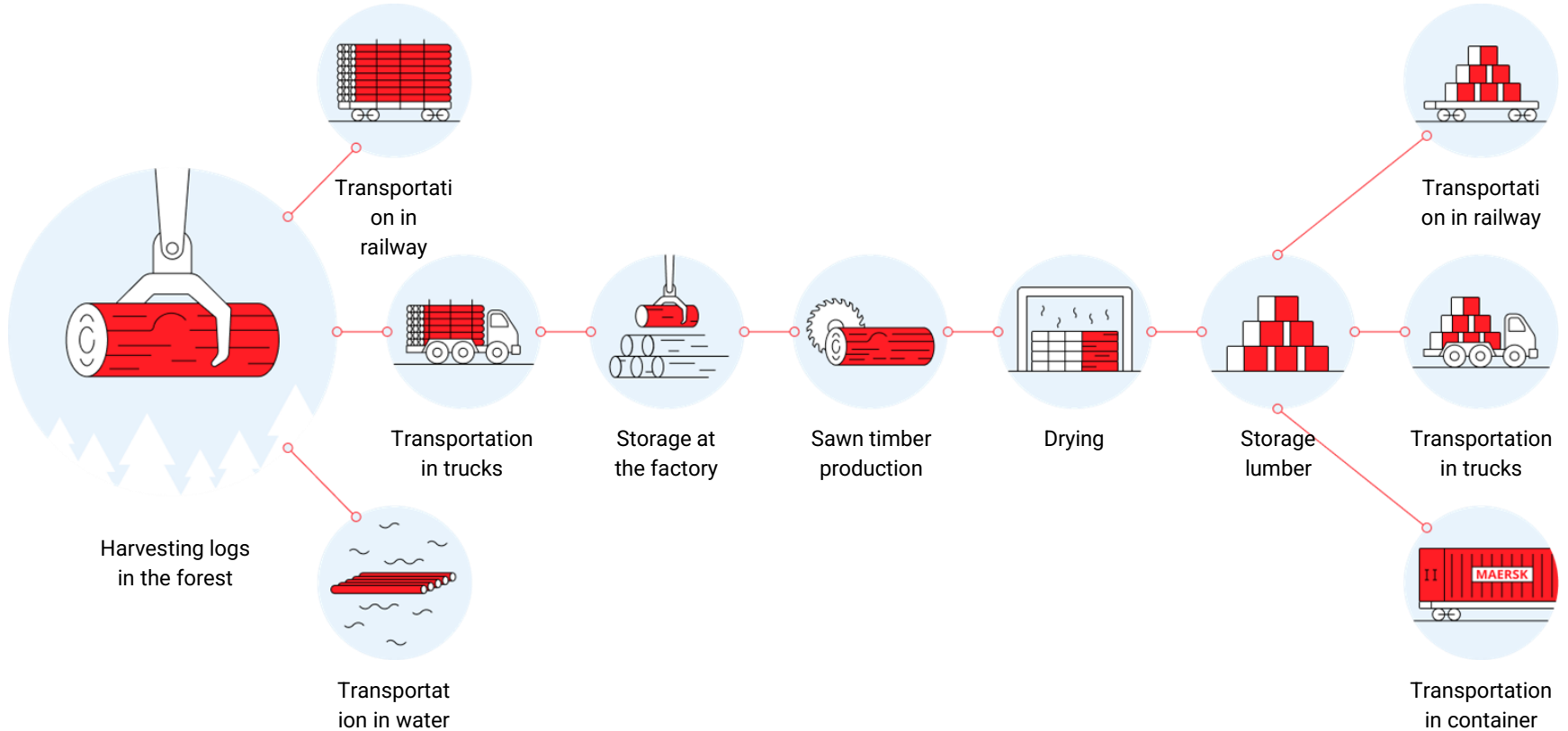




Company have own logging facilities and self-sufficiency in raw materials



Logistics



Sawn timber - brief



All of timber undergoes chamber drying till it reaches transport humidity of 18 +/- 2%

Deeper drying to 12 or 10 +/-2% is also possible under special order.

Goods are produced in new sawmill, which was technologically renovated in 2013

Main line Soderhamn Eriksson – USNR.

Sawn Boards are sorted by automated grading line FINSCAN using computer vision technology

Our sawn timber is used by plenty factories

Producing, wooden frame houses, BSH, CLT, Glue Laminated Timber, packing (pallet collars, boxes), cladding, molding, decking and decking etc.

Main sawn goods lengths are 4 and 6 m = 70% of volume



Our sawmill holds the certificate for **sustainable and responsible forest management - Forest Etalon (FE) and adopted for ISO 9001, ISO 14001, ISO 45001 certification standards.**



Main dimensions of the spruce board (mm)

Lengths: 3,0/4,0/5,1/5,4/5,7/6,0 m, though 4,0/6,0 m – basic length. The table shows the possible combinations of width and thickness of the spruce board. All dimensions are in mm.

| | 75 | 100 | 125 | 150 | 200 | 225 | 250 |
|--|----|----------------|----------------|-------------|-------------|-------------|-------------|
| | ● | ● 22x100 | ● | ● | | | |
| | | ● 28/30x100 | ● | ● | | | |
| | | ● 35x100 | ● | | | | |
| | | ● 44x100 | ● | ● | ● 45x170 | ● 45x190 | |
| | | ● 47x100 | ● | ● | ● | ● 47x225 | ● |
| | | | ● 60/63x125 | ● | ● | | |
| | | | | ● 75x150 | ● | | ● 75x250 |

Main dimensions of the pine board (mm)

Lengths: 3,0/4,0/5,1/5,4/5,7/6,0 m, though 4,0/6,0 m – basic length. The table shows the possible combinations of width and thickness of the pine board. All dimensions are in mm.

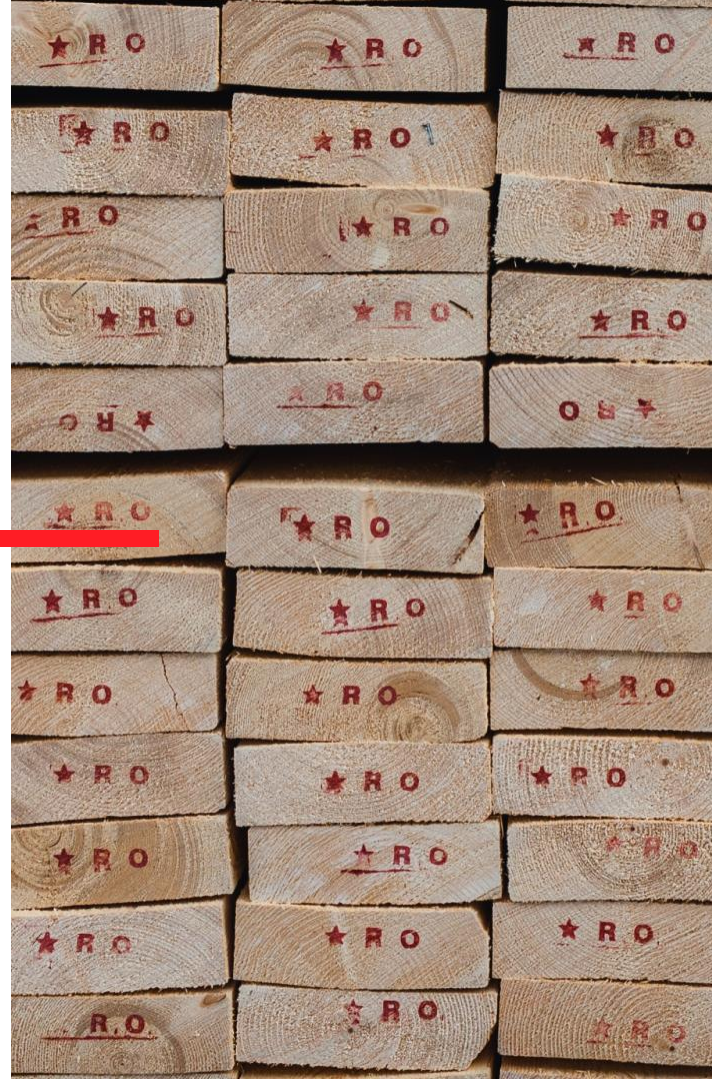
| | 75 | 100 | 125 | 150 | 200 | 225 | 250 |
|--|----|----------------|-------------|-------------|-----|-----|-----|
| | ● | ● 22x100 | ● | ● | | | |
| | | ● 25x100 | ● | ● | | | |
| | | ● 28/30x100 | ● 28x125 | ● 28x150 | | | |
| | | ● 34x110 | | ● 34x140 | ● | ● | |
| | | ● | | ● 38x150 | ● | ● | ● |
| | | | ● | ● 50x150 | ● | | |
| | | | | ● 75x150 | ● | | ● |



GRADE US-V, EXPORT VISUAL

The main grade category for the production of load-bearing beams, wall structures, moldings and any other wood products

- Main grade for the most markets
- Good geometry
- No wane
- Strict limitations for knots





GRADE 3-4, EXPORT (VI grade)

Used in construction; manufacturing of low-responsibility parts; production of containers and packaging; cutting into small blanks for various purposes

- Second main grade for the basic markets
- Small wane
- Ideal for construction and packaging
- Good for formwork





GRADE 4, REJECT-SCHAAL (VII grade)

Household lumber

- Ideal variant for household needs
- Good for formwork
- For small timber details and further processing
- Can be optimized for further re-sorting





Own wagons and container loading terminal. Shipment can be done by **trucks, containers or railway**



Birch products

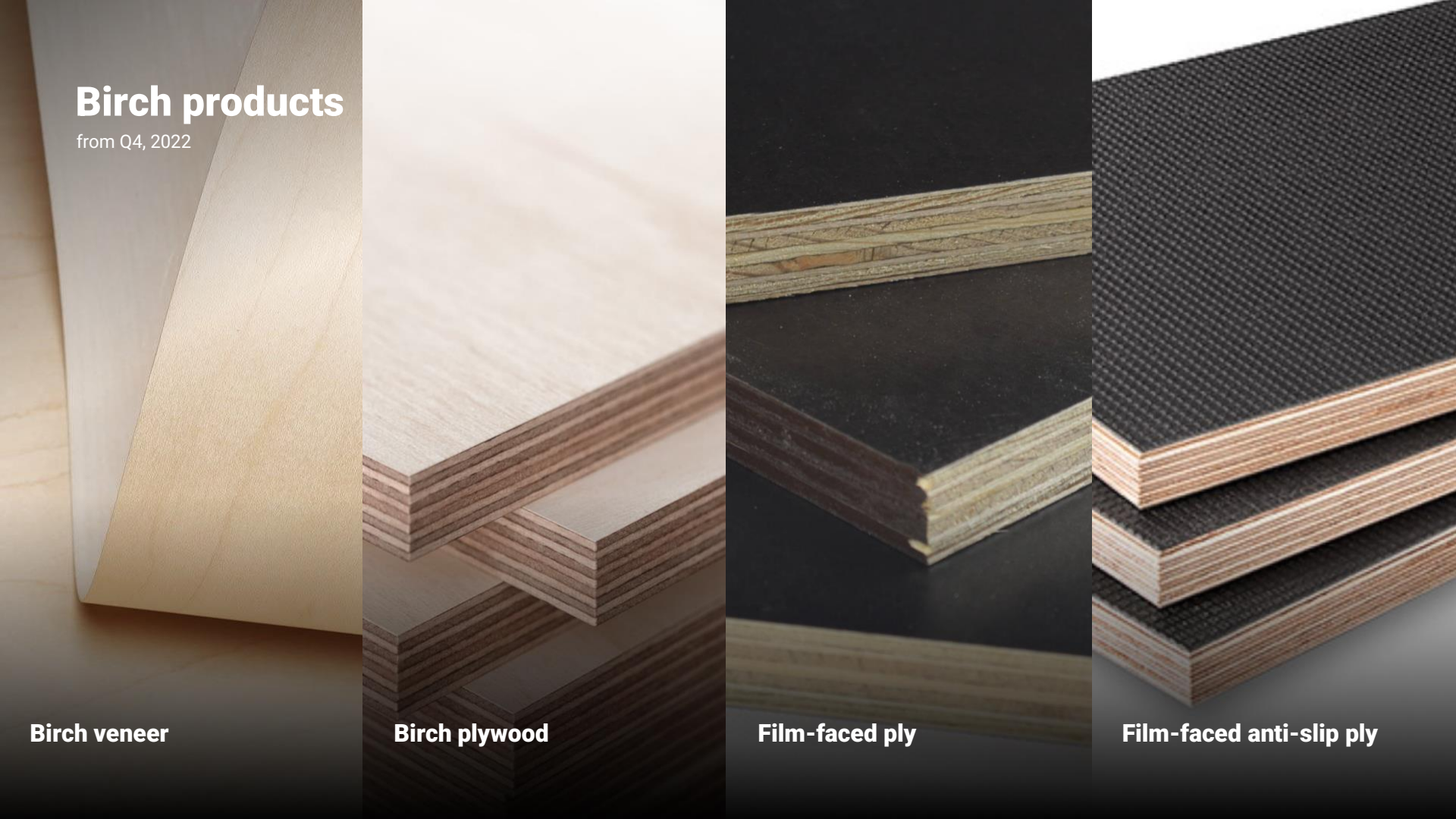
from Q4, 2022

Birch veneer

Birch plywood

Film-faced ply

Film-faced anti-slip ply



Veneer

FACE veneer E-2 grade,
CORE veneer 3-4 grade,
PIECES veneer reject grade

Size 1.0-3.2 mm

8'x 4' (2440 x 1220 mm)

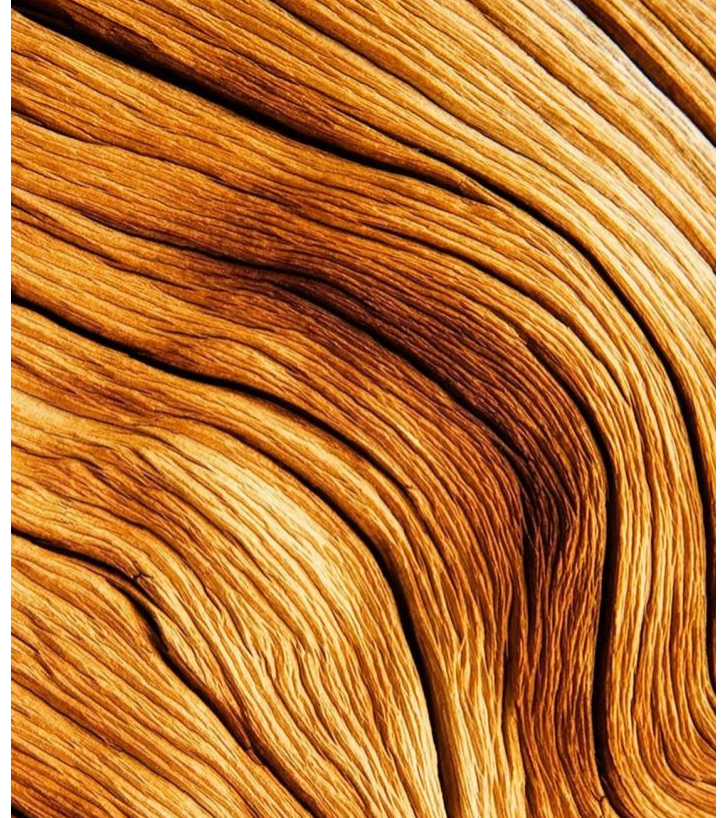
6'x 3' (1830 x 915 mm)

4'x 4' (1220 x 1220 mm)

4'x 8' (1220 x 2440 mm)

Grading in accordance to
GOST 99-96 and PS 1-09

Start of production:
from 2023



Humidity = 8 +/-2%

Rotary cut veneer



Plywood

WP (Water Proof)

BWP (Marine Boil Water Proof)

Sizes (preliminary): ...9, 12, 16, 18... mm

8'x 4' (2440 x 1220 mm, 2500 x 1250 mm)

Interior/Exterior

Grading in accordance to

GOST 3916.1-96 and EN635-

2, EN 636, EN 13986:

2004+A1 2015

Start of production:

From 2024



100% birch plywood

with high durability and moisture resistance



Factory can produce special sizes by order but minimum volume 500 m³ is required. Packing of veneer consists of pallets with strapping film.

Planed and profiled



Cladding



Floorboards



S4S



Carcass



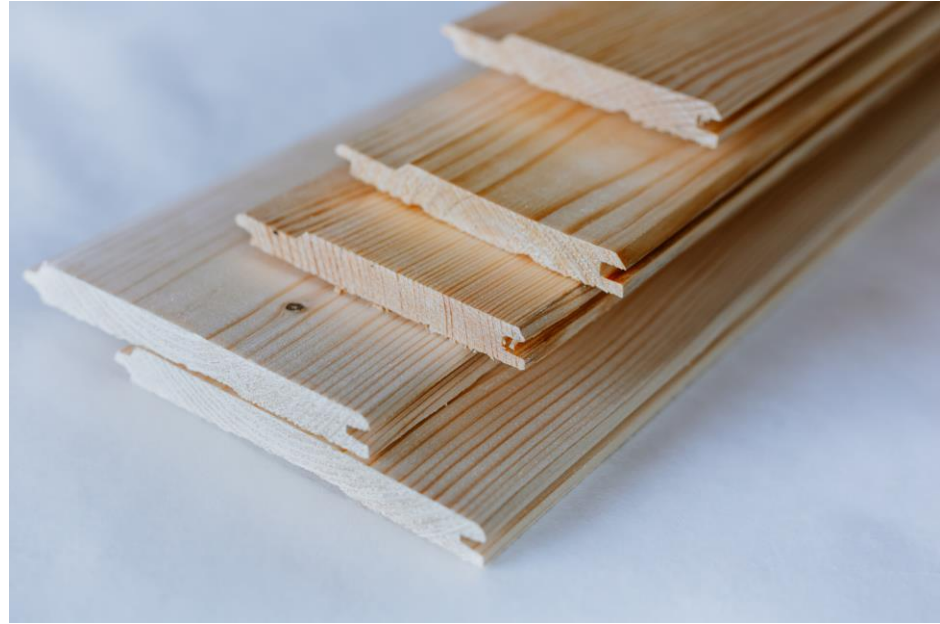
Molding



Rails

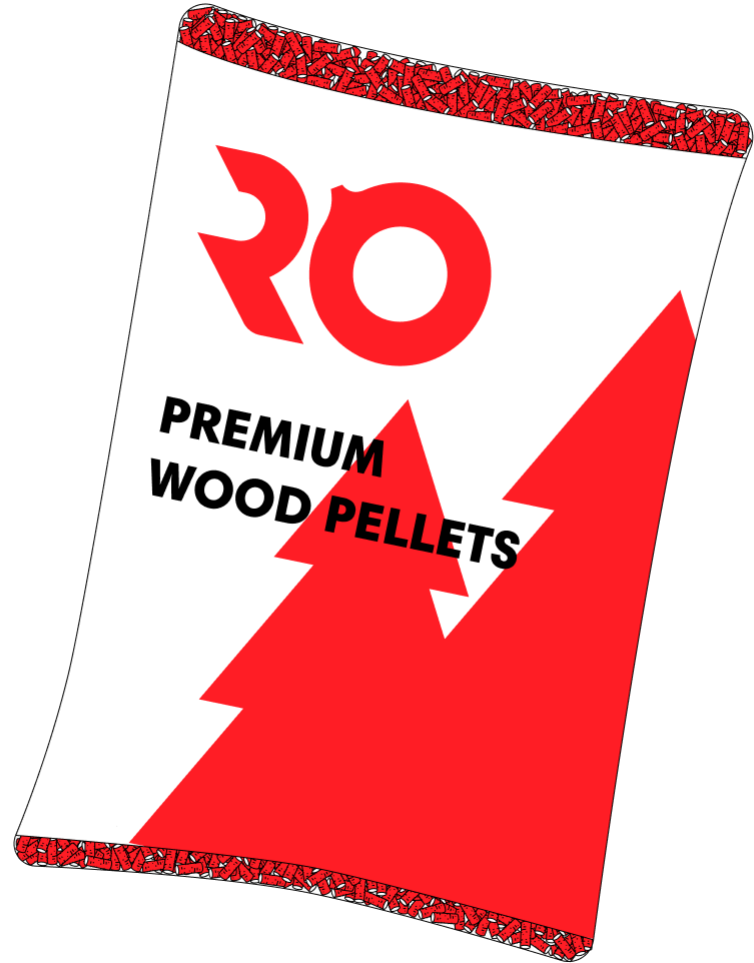


Decking



Pellets

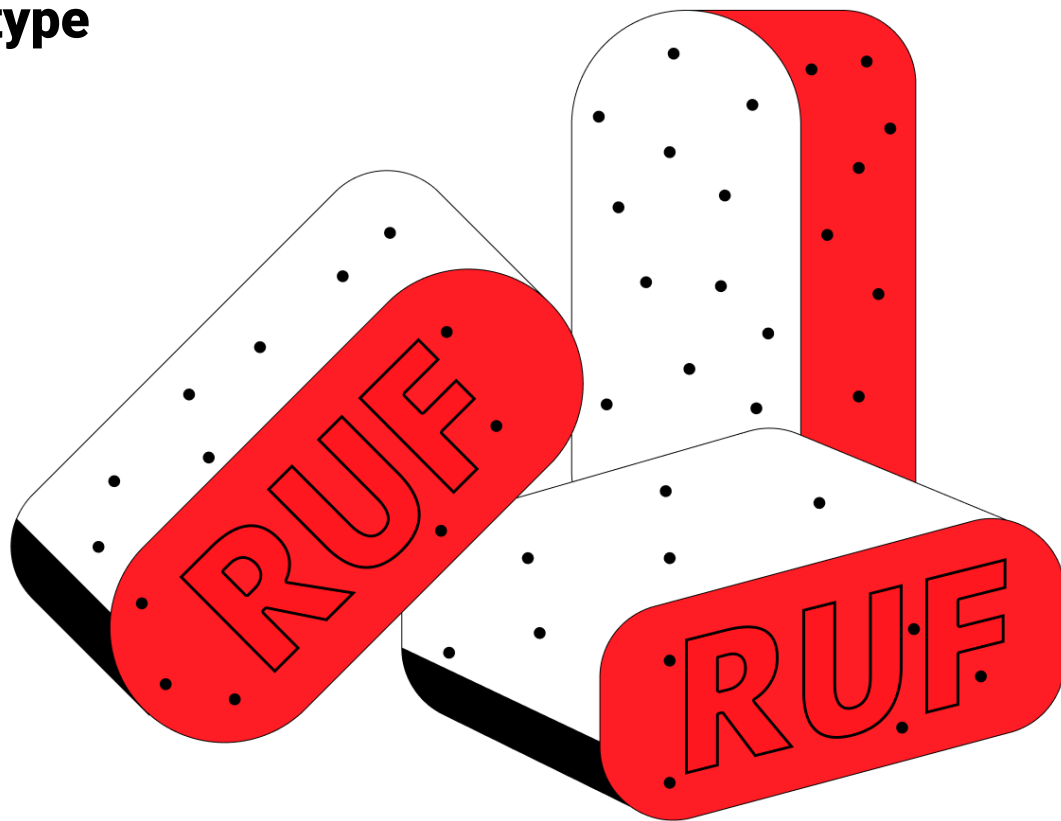
15/25 kg & 1 ton pack 6/8 mm



Retail packaging – ready for sale

Fuel birch briquette RUF type

150x100x60 mm, 1 pack — 12 psc



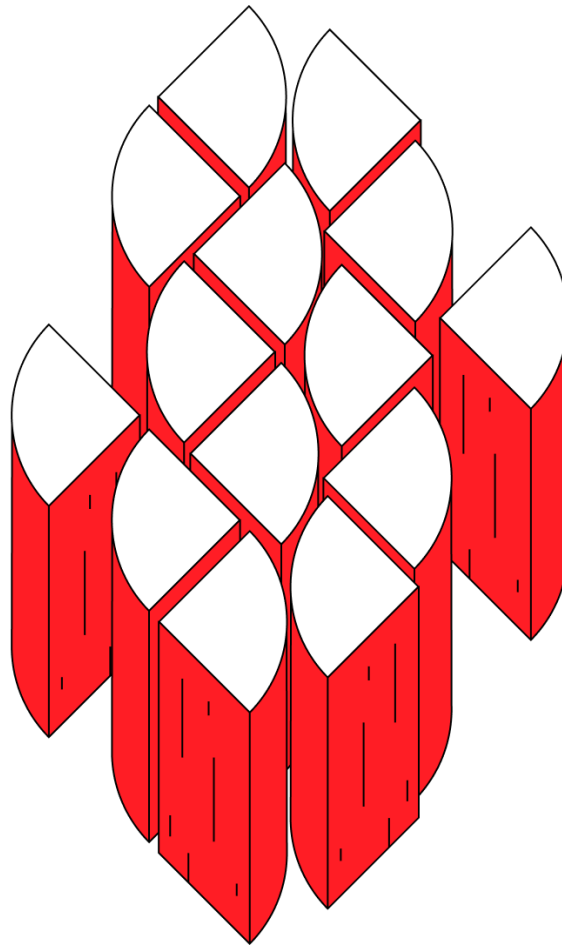
Retail packaging – ready for sale

Firewood

Chopped, Coniferous, Birch

In boxes / In mesh

LENGTH — 30 cm



Retail packaging – ready for sale



**Red
October**

Timber from Urals



Thank you for your time!

614058 9-TH JANUARY STR., PERM, RUSSIA

Your Contact: Sergey Tyabin

+7(342)256 40 50

SALES@RO1910.RU

ro1910.ru